



www.premier-gs.com • Phone: 763.263.0025

Page Wide Media Application



Guide





Page Wide Media Application Guide



Guide



Our Page Wide products are designed to work with all high speed print systems. Our two most common coatings are matte porous and glossy microporous. Both coatings are designed to hold a large ink load in a very stable format to avoid ink bleeding and protect the ink from water damage or smearing.

Many of our matte coatings are compatible with UV printers as well.

This Guide is designed to simplify the process of choosing the right product for your high speed printer.

- PGS-QMPP10 *10 mil* **Matte stay-flat polypropylene**
- PGS-QMPP8 *8 mil* **Matte stay-flat polypropylene**
- PGS-QMPS *8mil* **Satin microporous RC instant dry photo paper**
- PGS-QPG8 *8mil* **Gloss high density microporous polypropylene**
- PGS-QDMPP *11mil* **Quick Dry Matte Photo Paper**
- PGS-QBLF9 *9mil* **Matte backlit polyester film**
- PGS-QMPA *8mil* **Professional high speed matte polypropylene w/permanent adhesive and anti-slip PET liner**



QEs & As

Q: Are any of our media products compatible with other printer inks systems?

A: Yes, many of our media products are cross platform compatible. Take a look at the ink icons to the right. These icons will appear throughout this guide to all media that applies.

Identifying Media Ink Sets:



AQUEOUS LATEX ULTRAVIOLET ECO-SOLVENT



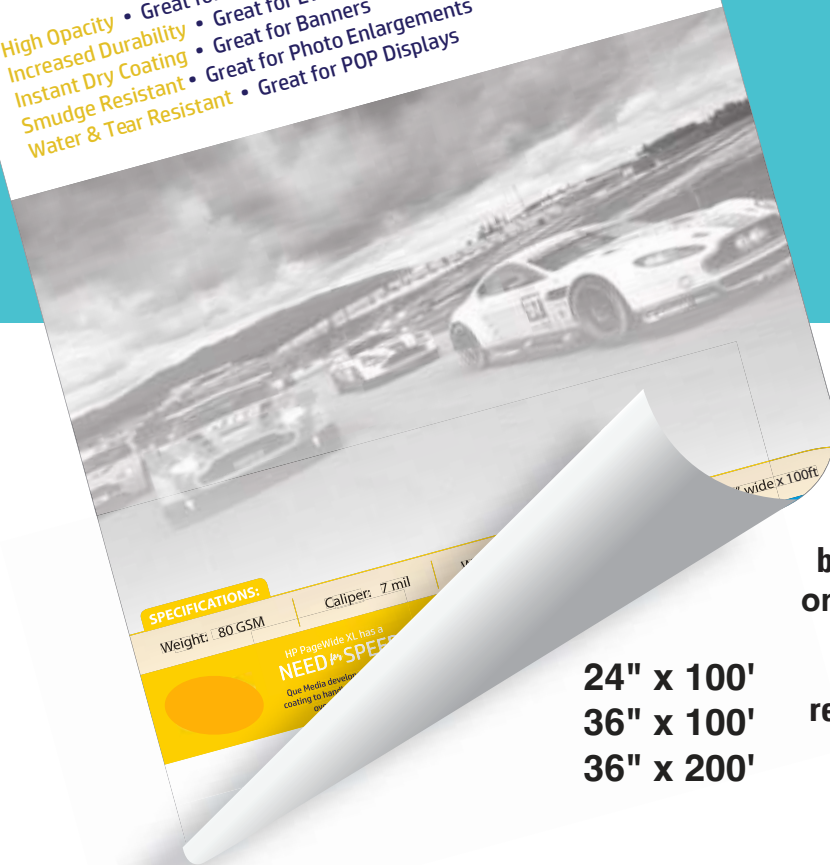
www.premier-gs.com • Phone: 763.263.0025

WIDE FORMAT &
COLOR LASER MEDIA

10 mil & 8 mil Stay Flat Matte Polypropylene

Matte stay-flat
polypropylene

High Opacity • Great for Posters and Presentations
Increased Durability • Great for Event Displays
Instant Dry Coating • Great for Banners
Smudge Resistant • Great for Photo Enlargements
Water & Tear Resistant • Great for POP Displays



SPECIFICATIONS:

Weight: 80 GSM

Caliper: 7 mil

HP PageWide XL has a
NEED SPEED

Que Media Developer
coating to help

24" x 100'
36" x 100'
36" x 200'

APPLICATIONS

- Banners
- Posters & Presentations
- Photo Enlargements
- POP Displays
- Event Displays

PGS-QMPP10 PGS-QPPM8

This polypropylene has a specially formulated coating on the backside to force the media to lay flat on both sides. This Media has good tear resistance and its microporous top coating gives it the ability to reproduce rich, accurate color. This is an ideal product for indoor signage.

Need Printed Samples?

See, touch, and feel our entire wide format print media line.
Give us a call for more details.

763.263.0025



www.premier-gs.com • Phone: 763.263.0025

WIDE FORMAT &
COLOR LASER MEDIA

8 mil Satin microporous RC instant dry Photo Paper

APPLICATIONS

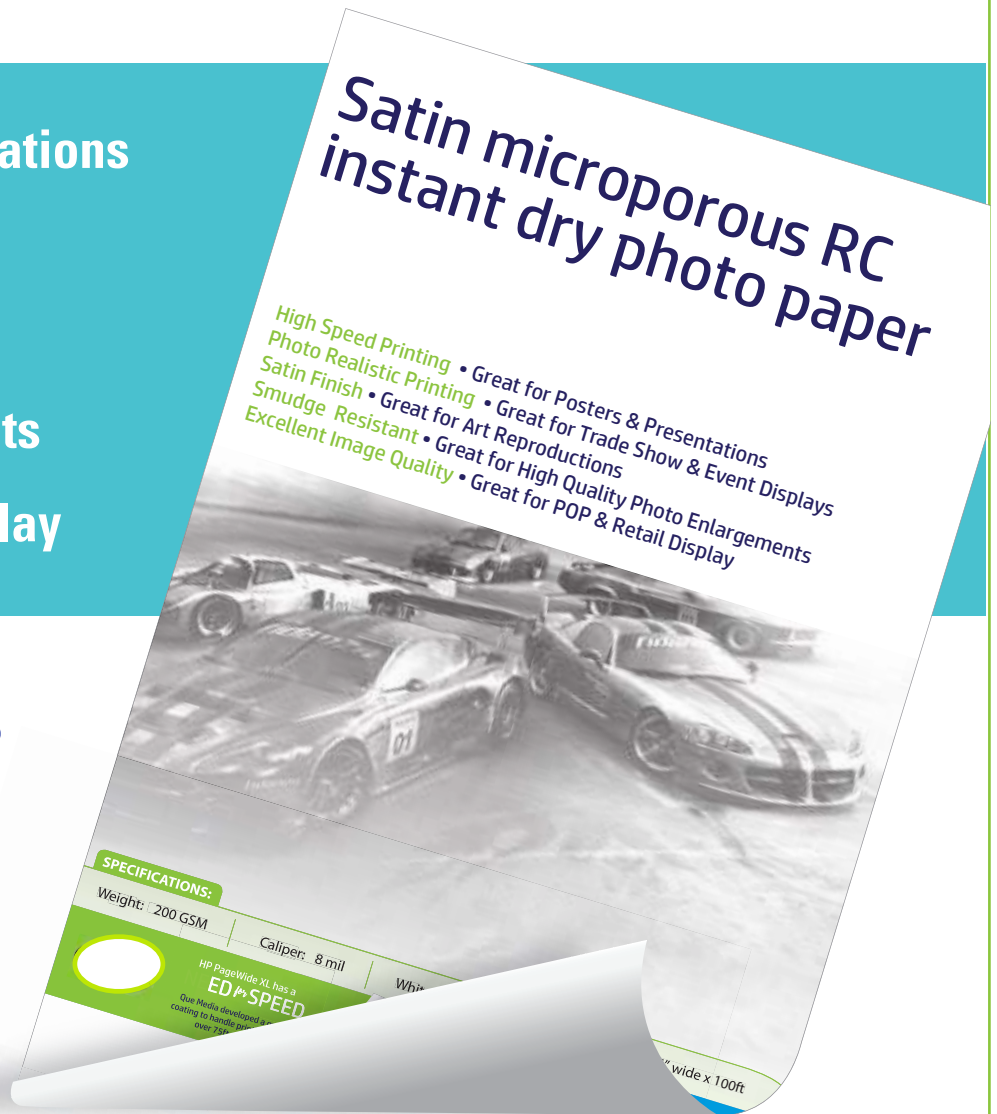
- Posters & Presentations
- Event Displays
- Art Reproductions
- Photo Enlargements
- POP & Retail Display

PGS-QMPS

Our high quality 200 GSM satin photo paper has a true RC, microporous coating for instant-dry results and can accept heavy ink loads. Ideal for applications that need real life reproduction as well as proofing.

24" x 100'

36" x 100'





www.premier-gs.com • Phone: 763.263.0025

WIDE FORMAT &
COLOR LASER MEDIA

Everyday gloss high density microporous polypropylene

Gloss high density microporous polypropylene

- Prints Fine Detail • Great for High Quality Photo Reproductions
- Durable • Great for Retail
- Wide Color Gamut • Great for Trade Show Graphics
- Instant Dry Coating • Great for Event Display
- Water Resistant • Great for POP



SPECIFICATIONS:

Weight: 163 GSM Caliper: 8 mil Width: 36" wide x 100ft



24" x 100'
36" x 100'

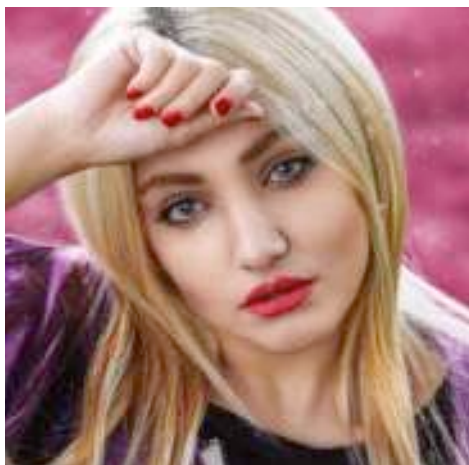
APPLICATIONS

- Photo Reproductions
- Event Displays
- Retail
- Trade Show Graphics
- POP Display

PGS-QPG8

This media produces high performing banners with superior tear and water resistance. Its microporous coating gives it the ability to reproduce true high quality photographic images with rich blacks.

WIDE FORMAT &
COLOR LASER MEDIA



PGS-QDMPP

Quick dry matte photo paper

24" x 100'

36" x 100'

36" x 200'

Our Quick Dry Matte Poster Paper delivers outstanding color saturation and excellent print resolution. Its microporous receptive coating is capable of withstanding heavy ink loads without causing ripples from ink saturation. Equipped with a bright white point, best used for décor photo printing, or economical point of purchase graphics. Compatible with Aqueous, Pagewide, Latex, and UV curable print platforms.



Benefits:

- Water Resistant
- Excellent Print Resolution
- Bright White Point
- Economical




Applications:

- Posters
- POS Graphics
- Photo Reproduction
- Framed Art

Registered Latex Developer



TECHNICAL DATA:

SURFACE FINISH:	Matte	GLOSS MEASUREMENT:	4 +/- 10% by angle of 60°
BASE MATERIAL:	Paper	DURABILITY:	Indoor: Up to 1 year Outdoor: 6 months
BASE WEIGHT:	228 GSM +/- 10%	ROLL LENGTH:	100 FT.
CALIPER:	11 Mil	ROLL WIDTHS:	24", 36", 42"
BRIGHTNESS:	108 (ISO Blue Whiteness)	CORE:	3" with 2" Adapter
WHITENESS:	147 (CIE Ganz)	PRINT SIDE:	Print Side Out
OPACITY:	99	INK RECOMMENDATIONS:	 AQUEOUS  UV  LATEX



This media is designed for digital printing applications using OEM printers with their accompanying OEM ink sets. Although designed for all printers using the aforementioned OEM matching ink sets; actual results may vary depending on printer model, age, print design, environmental conditions, and other factors. Exposure of a print to atmospheric pollutants, or to temperature, humidity, and / or lighting extremes can result in fading, color shifting, or other visual changes. The ideal conditions for printing and storage are a temperature of 70°F ±5°F and relative humidity of 50% RH ±3% RH. Our wide format media is guaranteed against manufacturing flaws and defects and is designed to resist printer jams when used properly. Storage: Up to one year if stored in proper conditions (cool, dry place 50-80°)



www.premier-gs.com • Phone: 763.263.0025

WIDE FORMAT &
COLOR LASER MEDIA

Matte backlit polyester film

Matte backlit polyester film

Sharp Images • Great for Lightbox Displays
Instant Dry Coating • Great for Exhibition Panels
Dimensionally Stable • Great for Transit Graphics
Excellent White Point • Great for Menu Boards



SPECIFICATIONS:

Weight 245 GSM Caliper 8 mil

HP PaperWide XL has a
NEED FOR SPEED

Que Media develops
coating to help

36" x 100'

APPLICATIONS

- Lightbox Displays
- Exhibition Panels
- Menu Boards
- Transit Graphics

PGS-QBLF9

With a matte porous top coat that allows for heavy ink saturation and deep, dense blacks WRBLF will produce graphics that will "pop" with every type of backlit box. Quick dry time and water resistant.

Need Printed Samples?

See, touch and feel our entire wide format print media line. Give us a call for more details.

763.263.0025





www.premier-gs.com • Phone: 763.2

WIDE FORMAT &
COLOR LASER MEDIA

8 mil Matte Polypropylene w/permanent PSA

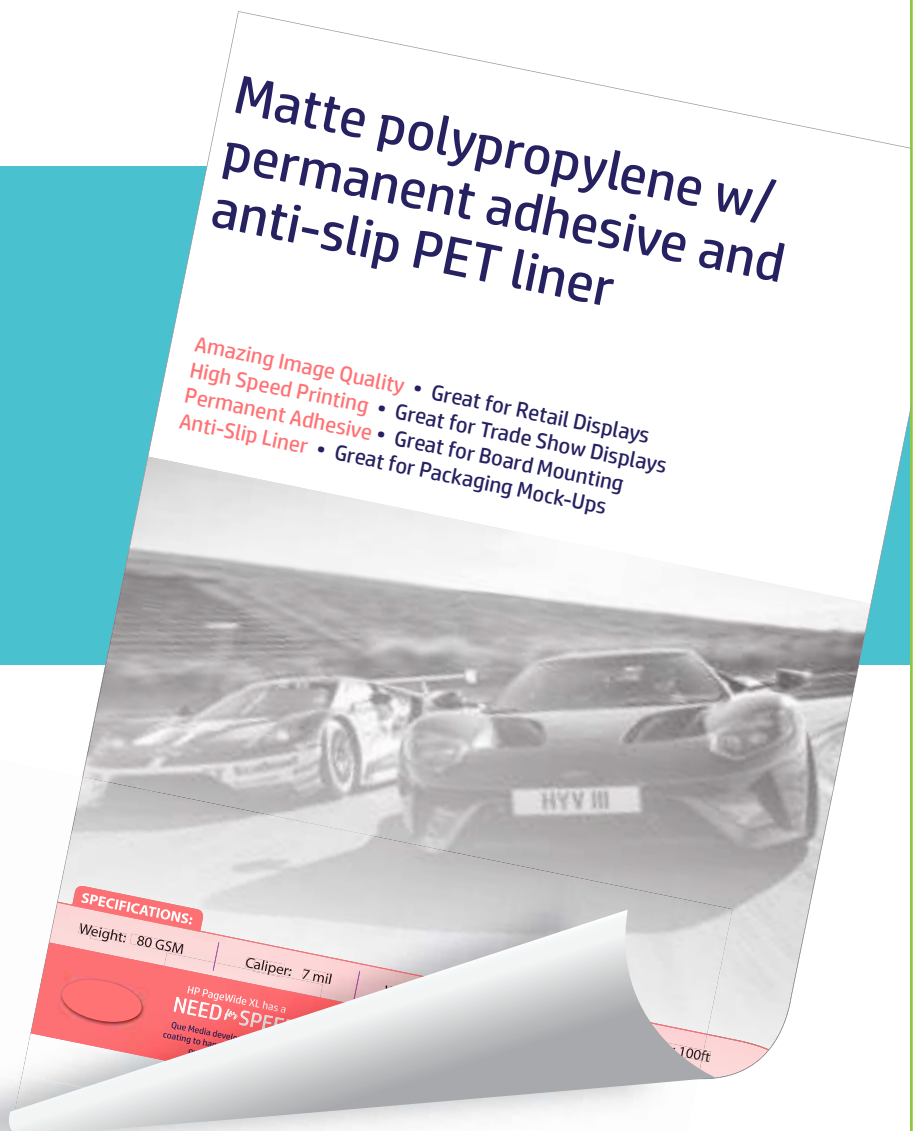
APPLICATIONS

- Retail Displays
- Trade Show Displays
- Board Mounting
- Packaging Mock-Ups

PGS-QMPA

Our 8mil polypropylene has an instant dry, bright white, matte, water resistant coating, and an anti-slip PET liner that keeps production moving. Our coating accepts high ink loads for clean, crisp details. Use for any flat-mounted applications.

36" x 150'



These products were developed to match
the requirements for HP Page Wide printers:



www.premier-gs.com • Phone: 763.263.0025