

# GRAPHTEC

PRECISION CUTTING SOLUTIONS

# FC9000

## ROLL FED CUTTER SERIES

FC9000



[www.premier-gs.com](http://www.premier-gs.com) • Phone: 763.263.0025

TAKE UP SYSTEM OPTIONAL



### VIDEO TRAINING

PRESS PLAY ► GET TO WORK

## HIGH PERFORMANCE • MAXIMUM PRODUCTIVITY

FC9000-75

30"



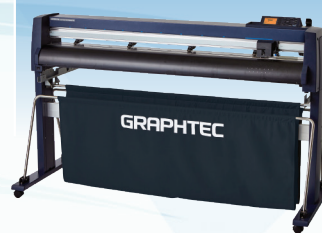
FC9000-100

42"



FC9000-140

54"



FC9000-160

64"



**GRAPHTEC**  
Graphtec America, Inc.

# PRECISION CUTTING SOLUTIONS

### PERFORMANCE & PRECISION MEETS VALUE

Graphtec **FC9000 Series** is the most advanced, versatile roll fed cutting plotter to date. Revered for its dependable, high-precision cutting capabilities with both printed and unprinted materials, the FC9000 Series is the ultimate finishing solution for the wide format signage, apparel, and automotive industries. A robust feeding system, tool head, and new ARMS sensor further contribute to the FC Series' class leading performance.

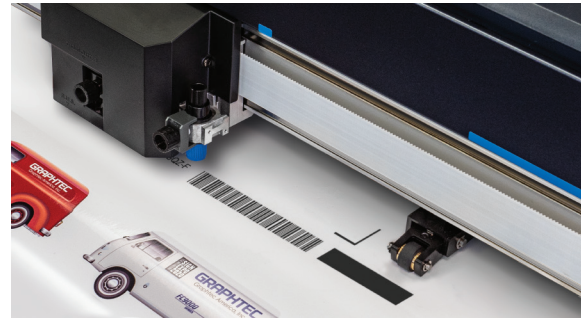
With the **USB Offline Operation** function, cutting data saved to USB flash memory can be output directly to the cutting plotter, enabling users to operate the FC9000 cutter without a computer.

**Data Link Barcode System** allows cutting different jobs with different data sequentially by detecting the Start Mark of each new job. By reading the Graphtec barcode, the FC9000 automatically detects its linked data from a PC or USB Drives. This function is available regardless of printer or RIP software used.

The FC9000 Series barcode data management system allows the **Continuous Cutting** of multiple jobs with different data sequentially by detecting the Start Mark of each new job.

With **Multiple Mark Compensation**, the FC9000 can significantly increase your productivity. Contour cutting is repeated for each copy, cutting production time for Print & Cut applications.

**Auto Paneling** automatically splits long-length jobs into smaller pages that are cut sequentially to prevent skewing.



Barcode Scanning System



USB Offline Operation



Powerful Cutting Head: 600gf

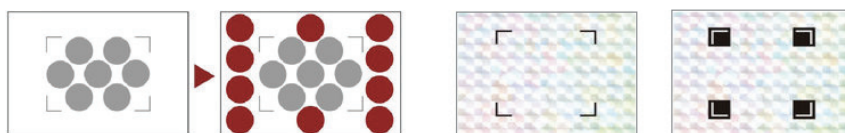


Intuitive 3.7" LCD Control Panel

### ARMS 8.0 NEW & IMPROVED FUNCTIONS

**Advanced Registration Mark Sensing** system delivers precise Print & Cut results using sensors to detect registration marks and perform axis alignment. Efficiency boosting functions improve productivity for Print & Cut applications such as labels and decals.

**Expanded Contour Cutting Area** expands the Print & Cut area to include objects outside of the registration marks. Production efficiency is enhanced and media waste is reduced.



Expanded Contour Cutting Area

Reversed Color Registration Marks

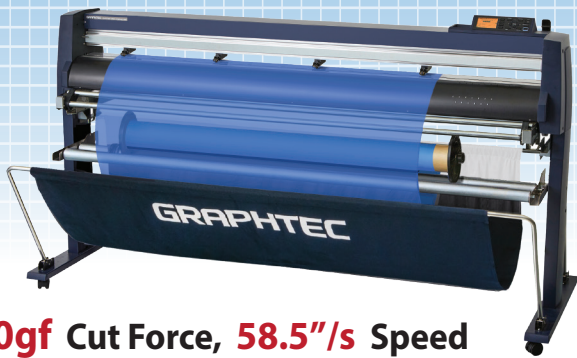


**Segment Area Compensation (X-Y)** Recognizes middle marks between the registration marks to correct X / Y-axis distortion for greater accuracy when cutting longer length media.

**Reversed Color Registration Marks** With this reversed color output, sufficient contrast is created for contour cutting of preprinted ultra glossy & reflective media.

# PRECISION CUTTING SOLUTIONS

## PRODUCTION CAPABILITIES



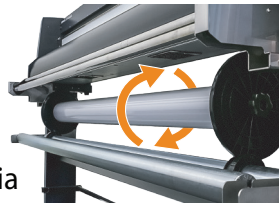
**600gf Cut Force, 58.5"/s Speed for up to 59.1mil Media Thickness**

The FC9000 Series offers best-in-class productivity and abilities with wider range of compatible media. Featuring blazing fast **58.5"/s** cutting speeds for media up to **59.1 mil** at an impressive cutting force of **600 gf**.

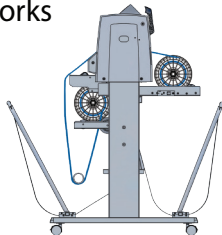
### Reliable Long-length Tracking with the Auto Take-up Reel System

(FC9000-140 & 160 models only)

The optional auto take-up system boosts production efficiency by automatically winding rolls of media using the equipped infrared sensor.



The Data Link / Bar Code feature works with the Take-up System to allow precision tracking of multiple jobs per roll up to 65 ft of media.



- FC9000-140 (OPH-A43)
- FC9000-160 (OPH-A44)



## STANDARD ACCESSORIES



**Blade Holder:**  
PHP33-CB09N-HS



**Media Flanges:**  
Ensures Accurate Media Tracking



**Fiber Pen:** Lumocolor-311-BK  
**Pen Adapter:** PHP31-FIBER



**Blade:**  
CB09UB

**Blade Loupe:** PM-CT-001  
This standard accessory helps to easily adjust blade length



### Included Design Plug-in and Software:

Graphtec provides you all of the tools necessary to create professional products with confidence.

- **Cutting Master 4 Plug-in:**  
Adobe Illustrator (PC, MAC)  
CorelDRAW (PC)



- **Graphtec Pro Studio:** Design Software - PC
- **Graphtec Studio:** Design Software - MAC
- **Windows Driver:** AutoCAD etc.

## GRAPHTEC 3 YEAR STANDARD WARRANTY

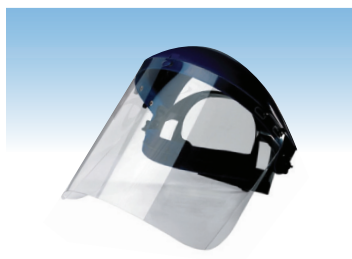
## MARKET APPLICATIONS



**SYMPATICO**  
DESIGN



**High Intensity Reflective**



**Safety Shielding**

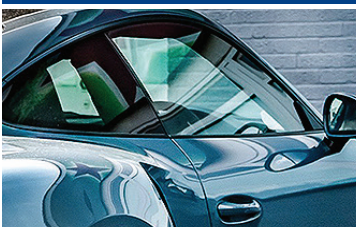


**Sandblast Masking**



**Vinyl Signage**

**Print and Cut**



**Window Tinting Film**



**Vinyl Decals**



**Paint Protection Film**

# FC9000 SPECIFICATIONS



**GRAPHTEC**  
PRECISION CUTTING SOLUTIONS



SCAN ME



**MODEL :** FC9000-75      FC9000-100      FC9000-140      FC9000-160

**Configuration :** Grit-rolling Plotter Driven by a Digital Servo Motor

**Maximum Cutting Width :** 30"      42"      54"      64"

**\* Guaranteed Tracking :** 30" x 50'      42" x 50'      54" x 50'      64" x 50'

**Mountable Media Width :** 2" to 36"      2" to 48"      2" to 60"      2" to 72"

**Maximum Cutting Speed :** 58.5"/s @ 45° Direction

**Cutting Force :** 600 gf in 48 Steps

**Number of Push Rollers :** 2 Rollers      3 Rollers      4 Rollers      4 Rollers

**Mountable Number of Tools :** 1 Tool (cutting blade, plotting pen or pouncing tool) in standard;  
2 Tools (cutting blade and plotting pen) when second pen-holder (optional) is installed

**Minimum Character Size :** Approximately 5 mm Alphanumeric (varies depending on character font and media)

**ARMS / Barcode / Data Link :** YES

**Offline Output Function :** USB Memory - 64 Files

**Maximum Cross Cut Width :** 30"      42"      54"      64"

**Interface :** Ethernet (10BASE-T/100BASE-TX) | USB 2.0 High Speed

**Programmable Resolution :** GP-GL™ mode: 0.1 / 0.05 / 0.025 / 0.01 mm • HP-GL®: 0.025 mm

**Mechanical Resolution :** 0.005 mm (5µm)

**Maximum Media Thickness :** 59.1 mil (1.48mm)

**Condition Settings :** Dual Configuration - 2 User Settings with 8 Separate Condition Settings per User

**External Dimensions :** w 53" x d 45" x h 48"      w 65" x d 45" x h 48"      w 77" x d 45" x h 48"      w 87" x d 45" x h 48"

**Weight :** 108lbs      123lbs      141lbs      154lbs

**Compatible Media :** Self-adhesive Vinyl Film, Diamond Grade, Fluorescent Film, Reflective Film, Sandblast Resist Rubber High-intensity Reflective Film, Window Tint Film, Paint Protection Film, Automotive Paint Protection Film

\* Operated with Graphtec specified cutting conditions and media. For long-length cutting, the basket is used



**GRAPHTEC STANDARD WARRANTY: 3 YEARS PARTS & LABOR WITH ONLINE PRODUCT REGISTRATION**

**Software :** **Cutting Master 4 - Plugin**  
Adobe Illustrator - Mac/ Win  
CorelDraw - Win

**Graphtec Pro Studio**  
Design Software - Win

**Graphtec Studio**  
Design Software - Mac

**Windows Driver**  
AutoCad / Vector Drawing  
Software Requiring a Driver

**VIDEO TRAINING**  
PRESS PLAY ▶ GET TO WORK  
[www.graphtecamerica.com/videos](http://www.graphtecamerica.com/videos)

**Graphtec Video Training** is a comprehensive series of instructional videos that are key to fully understanding the capabilities of the **FC9000 Series** cutter. **Advanced Features** and **Optional Accessories** are also demonstrated in depth so you can be fully trained and ready to boost productivity by mastering all the features and utilizing the full potential of this powerful roll-fed cutter.

rev 8-21