

**EPSON®**  
EXCEED YOUR VISION



P

SureColor® P-Series

Epson SureColor P10000

Epson SureColor P20000



# P

SureColor P-Series

## The Art of Performance.

When it came to developing the ultimate tool for high-speed, on-demand production printmaking, we began at the intersection where tradition meets innovation. The result is a completely redesigned printer capable of delivering performance unlike anything you've ever seen from Epson.

### Introducing the all-new Epson® SureColor P10000 and P20000 Printers

Incorporating our latest professional imaging technologies — including the groundbreaking, high-performance Epson PrecisionCore® MicroTFP printhead and our next-generation Epson UltraChrome® PRO pigment ink set — these SureColor P-Series 44" and 64" printers are the future of wide-format, high-production imaging.



# P20000

Professional 64" Photographic Printer



## The Art of Performance

The ultimate production tool for on-demand color and black-and-white printmaking, the 64" Epson SureColor P20000 printer is the worthy successor to one of the most widely used fine art printers of all time — the Epson Stylus® Pro 11880. Designed for high-production photographic, fine art and indoor display graphics printing, it incorporates our most advanced imaging technologies to date, including the groundbreaking 2.6" Epson PrecisionCore MicroTFP printhead and next-generation Epson UltraChrome PRO 9-color pigment ink set. Without question, the SureColor P20000 is perfect for the demanding requirements of high-volume, high-quality and high-impact printmaking.

Photographic Print Speeds <sup>1</sup>	16" x 20"	20" x 30"	40" x 60"
Production – 600 x 600 HS	1:04	1:49	5:24
High Quality – 1200 x 1200 HS	2:09	3:40	10:52
Extreme Quality – 2400 x 1200 HS	3:17	5:33	16:30

HS = High Speed Mode (Bi-Directional Print Mode) | Print speeds are shown in min:sec  
16" x 20" centered on 17" x 22" | 20" x 30" centered on 24" x 34" | 40" x 60" centered on 44" x 64"

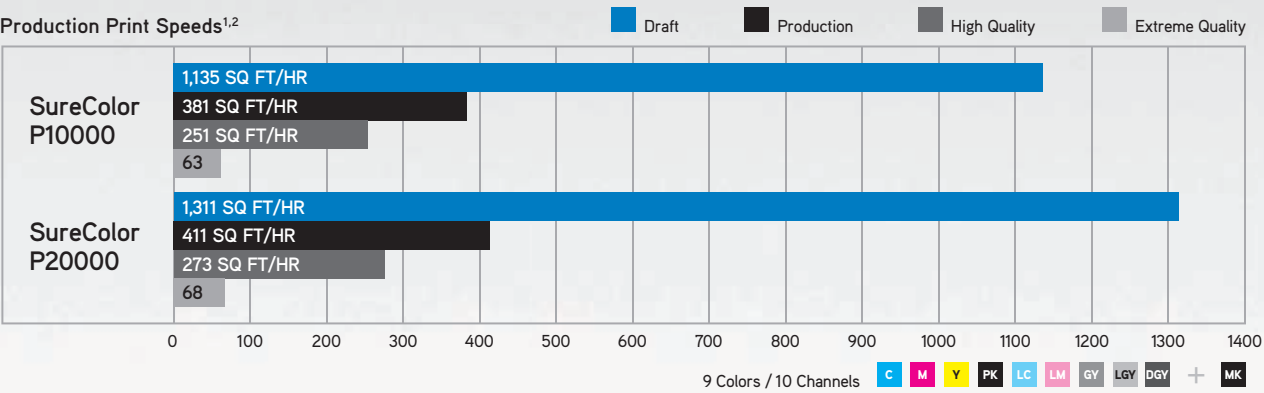
# P10000

Professional 44" Photographic Printer



## A New Era of Production

Designed for on-demand poster, wall décor and indoor display graphics applications, the Epson SureColor P10000 stands out among Epson's family of 44" printers by setting a new benchmark for high-production imaging excellence. Incorporating our latest imaging technologies, it includes the all-new, high-performance 2.6" Epson PrecisionCore MicroTFP printhead and next-generation Epson UltraChrome PRO 9-color pigment ink set. Capable of printing high-quality images at phenomenal production speeds, the SureColor P10000 is ideal for high-volume printmaking.





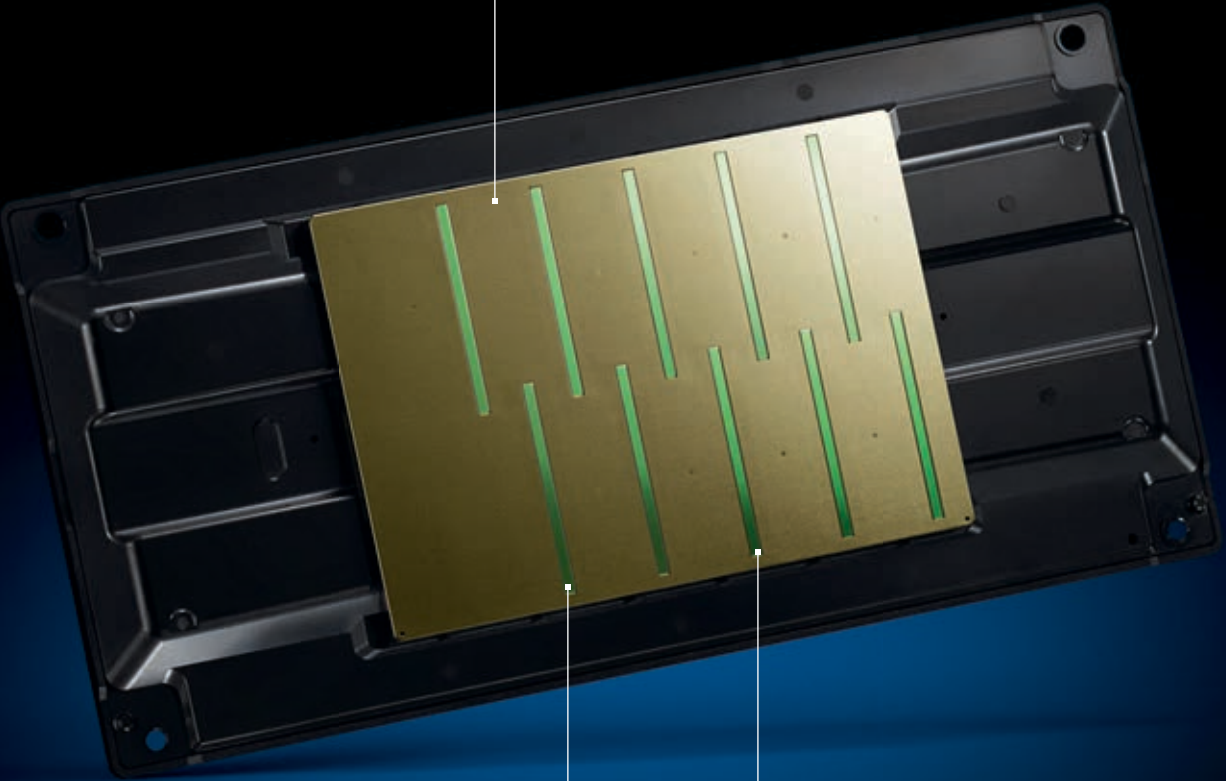
# Uncompromising Print Technology

Our groundbreaking Epson PrecisionCore printhead technology offers unrivaled performance for professional imaging applications. And, with our next-generation Epson PrecisionCore MicroTFP 8,000-nozzle printhead configuration — designed specifically for these two SureColor P-Series printers — we’ve achieved another breakthrough. Featuring 800 nozzles per color — more than twice the amount found on any other P-Series printhead — these printers produce high-quality images at faster production speeds than ever before. Developed to work exclusively with our unique Epson UltraChrome PRO Inks, this is our most advanced printhead to date, offering exceptional accuracy, consistency and speed.



### Epson PrecisionCore Printhead

The all-new 10-channel 2.6" Epson PrecisionCore MicroTFP printhead features 800 nozzles per color — 8,000 total — for producing high-quality images at faster speeds than ever before. Enhanced variable-sized droplet technology, as small as 3.5 picoliters, supports outstanding quality at high-production print speeds.



### Automatic Nozzle Verification

The printhead's advanced built-in sensing technology monitors nozzle health and automatically detects and corrects printhead performance.

### Dedicated Black Ink Channels

Save valuable production time with dedicated channels for Matte and Photo Black, which allow for optimized Black ink density on various media.

# Introducing Epson UltraChrome PRO Ink

Long regarded as the standard by which all other professional-level pigment ink technologies are judged, Epson UltraChrome Inks consistently elevate performance imaging to new levels — and our next-generation Epson UltraChrome PRO Inks are no different. Building upon the breakthrough core pigments developed for UltraChrome HD, the 9-color UltraChrome PRO Ink set includes an all-new Dark Gray ink for 4 levels of Black, resulting in outstanding print neutrality at production speeds. And, with this latest generation of color pigment technology, we've achieved a breakthrough in print permanence, resulting in prints of exceptional quality capable of defining a legacy.



**4-Level Black Ink System**  
Featuring 3 levels of Gray ink, along with Matte or Photo Black, the printer achieves outstanding neutrality and tonality, even at the highest production print speeds.

Epson UltraChrome PRO  
Epson SureColor P10000 & P20000



Professional black-and-white prints



© Vincent Versace

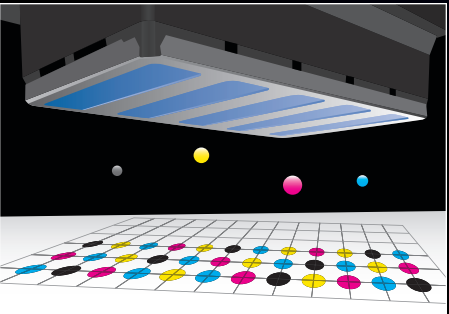
Photographic prints at production speeds



© Tim Tadder

## Epson Precision Dot Screening

This advanced algorithm ensures incredible accuracy for the sizing, timing and placement of ink droplets — resulting in beautiful, continuous-tone prints.



## Improved Black Density

Higher-density Matte and Photo Black pigments produce a wider contrast ratio for optically clearer and sharper images on color and black-and-white prints.



## Print Permanence

Independently rated by Wilhelm Imaging Research Inc., our latest UltraChrome PRO Inks result in prints lasting up to 200 years for color and 400 years for black-and-white<sup>3</sup>.



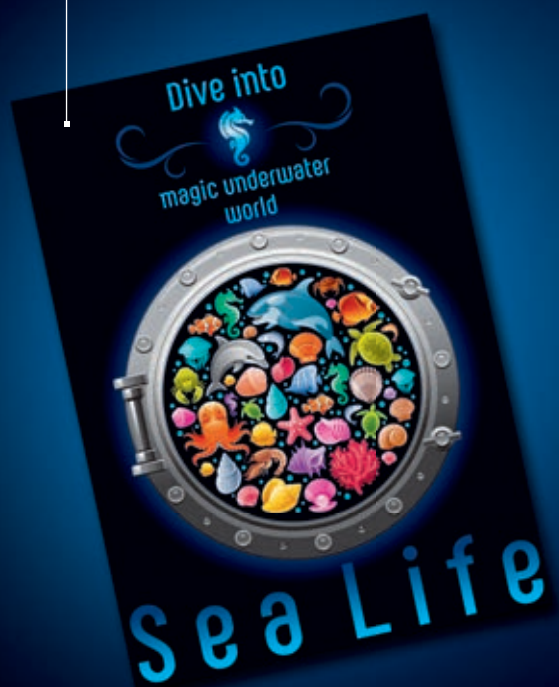


# P

## Applications

### High-Quality Poster Prints

Quickly print highly marketable 4-sided borderless posters on a variety of coated media at up to 411 sq ft/hr<sup>1,2</sup>.



### High-Production Indoor Signage

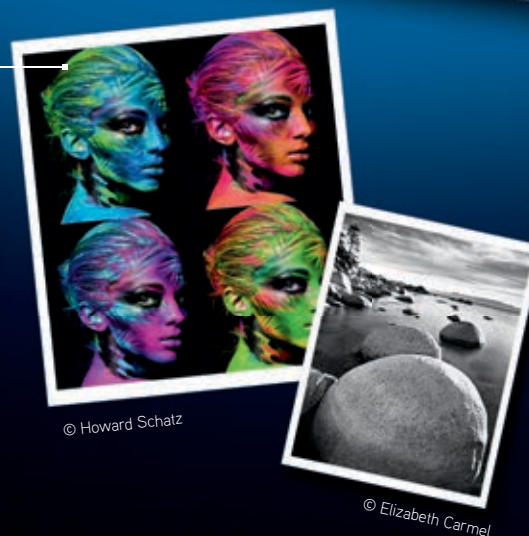
Achieve repeatable and accurate color — without banding or artifacts — for prints that look outstanding, even from inches away.

### Backlit Display and Trade Show Graphics

Epson UltraChrome PRO pigment inks deliver deep blacks and brilliant color for images sure to stand out in any setting.

### Professional Color and Black-and-White Photography

Incorporating our all-new UltraChrome PRO Ink set, the SureColor P10000 and P20000 produce extraordinary photographic prints at production speeds.



© Howard Schatz

© Elizabeth Carmel

### Fine Art and Canvas Prints

Create high-quality fine art and canvas production prints on demand at up to 273 sq ft/hr<sup>1,2</sup>.



© Elizabeth Carmel





# All-New Advanced Print Engine

The SureColor P10000 and P20000 print engine was designed from the ground up to support the unmatched performance of our next-generation Epson PrecisionCore MicroTFP printhead. Offering unique inductive roll media loading, roll-media feed-stabilizing technology, plus delicate handling for fine art media — as well as a straight-through rigid sheet media path — this new print engine not only improves upon the performance of our previous generation, it redefines what it means to perform.

## New Inductive Media Roller System

The printer's all-new roll-loading process allows for simple and accurate front-top roll loading with minimal errors or skewing.

## Front Straight-Through Path

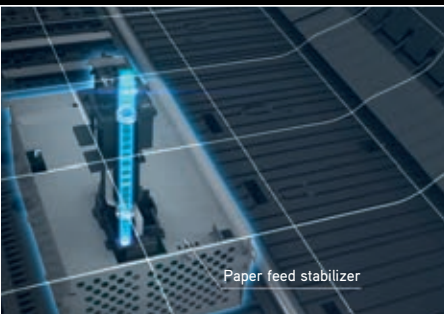
Cut sheets, posterboard and rigid aqueous media up to 1.5 mm thick.

## Real-Time Media Adjustment System

A built-in CMOS sensor photographs the back of media up to 60 times per second and adjusts media feeding in real time, resulting in high-quality printing from the first to last print on a roll.

## Included Internal 320GB Print Server

Boost workgroup productivity by quickly transferring print jobs to free up workstations. Plus, you can easily manage, save and reprint jobs.



## Optional Automatic Take-Up Reel

This user-installable system (sold separately) offers forward and backward take-up modes for unattended roll-to-roll printing.

## Epson SureColor P10000 & P20000 Printer Specifications

### Printing Technology

Advanced PrecisionCore MicroTFP 10-channel, drop-on-demand printhead

### Ink Type

Epson UltraChrome PRO pigment ink; 10-ink, 9-color (C, LC, VM, VLM, Y, GY, LGY, DGY, PK, MK)

### Independently Tested Print Permanence<sup>3</sup>

Color Up to 200 years  
Black-and-White Up to 400 years

### Nozzle Configuration

Color and monochrome heads; 800 nozzles x 10 color channels

### Droplet Technology

Smallest Droplet Size 3.5 picoliters  
Variable Droplet Technology can produce up to three different droplet sizes per line

### Maximum Resolution

2400 x 1200 dpi

### Printer Language/Drivers

Epson Professional Photographic Drivers standard

### Epson Intelligent Ink Cartridges<sup>4</sup>

In-box Cartridge Fill Volume 110 mL each color x 10 colors total  
Retail Cartridge Fill Volume 700 mL each color x 10 colors total  
Ink Cartridge Shelf Life 2 years from printed production date or 6 months after opened

Printer is designed for use with Epson cartridges only, not third-party cartridges or ink\*

### Real-Time Black Ink Selection

Dedicated Photo Black and Matte Black ink channels selected automatically based on media type

### Roll Media Handling

Maximum Roll Width 44" (SC-P10000)  
64" (SC-P20000)  
Roll Core Diameter 2" and 3"  
Maximum Roll Diameter 6.7" (170 mm)  
Roll Cutting<sup>5</sup> Internal rotary cutter  
Minimum Page Length 11.0" plus top and bottom margin  
Top/Bottom Margins (mm)  
Normal Setting varies based on media selection  
Optional Fixed 3/3, 15/15, 35/15, 45/15  
Left/Right Margins 3 mm per side or 0 mm at BorderFree<sup>®</sup> widths  
Margin Per Page From 6 mm to 65 mm applies for roll-cut off

### Roll Media Handling (continued)

BorderFree Print Widths 10", 13", 16", 17", 20"  
24", 29", 36" and 44"  
SC-P20000 also adds 50", 54" and 60"  
Roll Paper Remaining Printable barcode  
Optional Take-up Reel Roll-to-roll productivity

### Sheet Media Handling

Top-loading Up to 0.5 mm thick  
Front Straight-through 0.8 mm to 1.5 mm thick  
Top/Bottom Margins 3/15 mm (0.12"/0.59")  
Left/Right Margins 3 mm each side

### Printable Area and Accuracy

Maximum Paper Width 44" (SC-P10000)  
64" (SC-P20000)  
Minimum Cut-sheet Size 8.5" x 11" (Letter)  
Recommended Minimum 11" x 17" (Tabloid)  
Maximum Print Length<sup>6</sup> 590.55"  
Line Accuracy +/- 0.2% of specified length (+/- 0.26 mm min.)

### Printer Interfaces

USB 2.0, 100/1000Base-T Ethernet  
Included 320GB internal print server

### Operating Systems Supported<sup>7</sup>

macOS<sup>®</sup> 10.12.x – Mac<sup>®</sup> OS X<sup>®</sup> 10.7  
Windows<sup>®</sup> 10, 8.1 and 7 (32-bit, 64-bit)

### Weight and Dimensions (lb, W x D x H)

SC-P10000 278 lb, 74.0" x 38.4" x 45.1"  
SC-P20000 377 lb, 95.1" x 38.4" x 45.1"

### Sound Power Level

SC-P10000 Approx. 67.0 dB(A)  
SC-P20000 Approx. 65.3 dB(A)

### Environmental Characteristics

Temperature  
Operating 50 ° to 95 ° F (10 ° to 35 ° C)  
(Recommended) 65 ° to 75 ° F (18 ° to 24 ° C)  
Relative Humidity  
Operating 20 – 80% (no condensation)  
(Recommended) 45 – 60% (no condensation)

### Electrical Requirements

Voltage AC 110 – 120 V  
Frequency 50 – 60 Hz  
Current 5 A  
Power Consumption  
Printing Approx. 95 W  
Sleep Mode Approx. 2.8 W  
Power Off Less than 0.5 W  
ENERGY STAR<sup>®</sup> qualified

### Standards and Approvals

Safety Standards FCC part 15 subpart B class A  
CAN ICES-3(A) / NMB-3 A

### Product

SureColor P10000 Standard Edition SCP10000SE  
SureColor P20000 Standard Edition SCP20000SE

### Options and Accessories

Maintenance Ink Tank T619300  
Replacement Printer Cutter Blade C13S210040  
Additional Roll Media Adapters (pair) C12C932231  
Auto Take-up Reel Option C12C932201  
Adobe<sup>®</sup> PostScript<sup>®</sup> 3" Print Server C12C891131

### UltraChrome PRO Ink (700 mL)

Photo Black Ink Cartridge T800100  
Cyan Ink Cartridge T800200  
Vivid Magenta Ink Cartridge T800300  
Yellow Ink Cartridge T800400  
Light Cyan Ink Cartridge T800500  
Vivid Light Magenta Ink Cartridge T800600  
Dark Gray Ink Cartridge T800700  
Matte Black Ink Cartridge T800800  
Gray Ink Cartridge T800900  
Light Gray Ink Cartridge T800000

### Warranty and Extended Service Plans

1-year limited warranty, usually next-business-day on-site repair.  
1-year Epson Preferred<sup>SM</sup> Plus EPP1020KB1  
2-year Epson Preferred Plus EPP1020KB2

\* This product uses only genuine Epson-brand cartridges. Other brands of ink cartridges and ink supplies are not compatible and, even if described as compatible, may not function properly.

- 1 Print times are based upon print engine speeds only. Total throughput depends upon front-end driver/RIP, file size, printing resolution, ink coverage, network speed, etc. Normal Mode is for output printed using 1200 x 600 High-speed Mode.
- 2 Rated sq ft/hour based upon Epson internal testing using 44"-wide media on the SC-P10000 and 60"-wide media on the SC-P20000. Narrower print widths will operate at slower sq ft/hour speeds. Actual print speeds will vary depending upon width of media used.
- 3 Ink lightfastness rating based on accelerated testing of prints on specialty media, displayed indoors, under glass. Actual print stability will vary according to media, printed image, display conditions, light intensity, humidity and atmospheric conditions. Epson does not guarantee longevity of prints. For maximum print life, display all prints under glass or lamination or properly store them. Visit [www.wilhelm-research.com](http://www.wilhelm-research.com) for the latest information.
- 4 Cartridge yields vary considerably based on images printed, print settings, paper type, frequency of use and temperature. For print quality, a variable amount of ink remains in the cartridge after the "replace cartridge" indicator comes on. The printer ships with full 110 mL cartridges and part of the ink from the first cartridges is used for priming the printer.
- 5 High-volume cutting of canvas and heavy media stocks may require frequent cutter replacement.
- 6 On roll-based media as allowed by printer driver for Mac and PC. Application used, version of application and operating system version may limit maximum length.
- 7 For the latest drivers, visit [www.epson.com/support](http://www.epson.com/support)

**EPSON**<sup>®</sup>  
EXCEED YOUR VISION



Epson America, Inc. 3840 Kilroy Airport Way, Long Beach, CA 90806  
Epson Canada Limited 185 Renfrew Drive, Markham, Ontario L3R 6G3  
Please visit us at [proimaging.epson.com](http://proimaging.epson.com)

EPSON ULTRACHROME  
PRO INK

PRECISION  
CORE

SIGNATURE  
WORTHY<sup>®</sup>

LEGACY  
PAPERS

ENERGY STAR

Specifications and terms are subject to change without notice. EPSON, Epson Stylus, PrecisionCore, Signature Worthy, SureColor and UltraChrome are registered trademarks, EPSON Exceed Your Vision is a registered logomark and Better Products for a Better Future is a trademark of Seiko Epson Corporation. BorderFree is a registered trademark and Epson Preferred is a service mark of Epson America, Inc. Mac, macOS and OS X are trademarks of Apple Inc., registered in the U.S. and other countries. Windows is either a registered trademark or trademark of Microsoft Corporation in the United States and/or other countries. All other product and brand names are trademarks and/or registered trademarks of their respective companies. Epson disclaims any and all rights in these marks. Copyright 2017 Epson America, Inc. CPD-52031 12/17 PC

Better Products for a Better Future<sup>™</sup>  
[eco.epson.com](http://eco.epson.com)